



# Oxford Street TOTTERDOWN

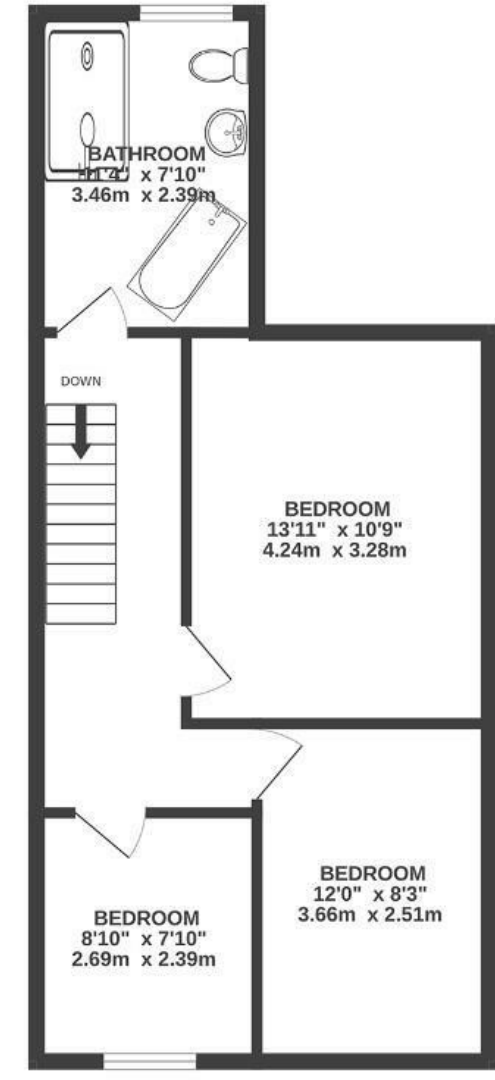
APPROXIMATE FLOOR AREA  
102 SQM / 1101 SQFT



GROUND FLOOR



FIRST FLOOR



**Boardwalk**

# Oxford Street

TOTTERDOWN, BRISTOL



£500,000



3 Bedrooms



BS3 4RH



1 Bathrooms

*“Our greatest memories include hosting pizza nights in the open plan kitchen-diner with the rear tri-fold doors letting in a warm breeze. In contrast, we fondly reminisce about winter evenings, cosying up on the sofa in the front room with logs on the fire. Totterdown is a lively community and hub. We have loved the convenience of sauntering over to the Oxford pub for a drink or a walk to Victoria Park on warmer days of the year.”*

